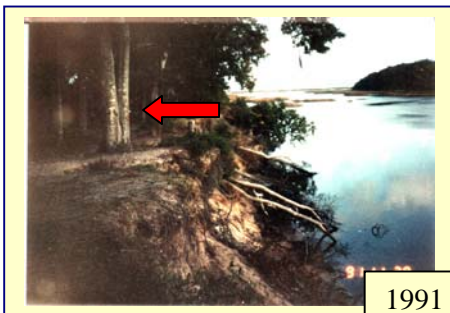
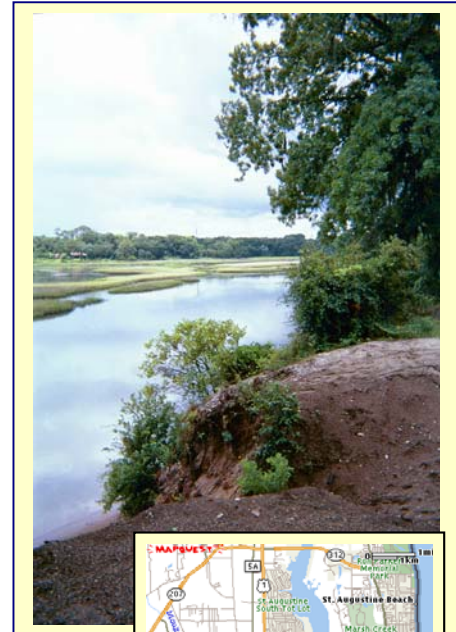




Client: *St. Johns County*
Project: *Moultrie Creek Erosion Study*
Location: *St. Augustine South*
Timeline: *August 2002 - March 2003*

P&A CONSULTING ENGINEERS INC., was contracted by St. Johns County to study the erosion of the bluffs along Moultrie Creek and Shore Drive in the St. Augustine South Subdivision. Historical research, photographic interpretation, site information, and interviews with local residents conducted by P&A document the seriousness of the problem and clearly demonstrate a direct correlation between bluff erosion and human activity related to the population increase in the St. Augustine South Subdivision. The use of the bluffs and the creek for recreational activities has destroyed soil-stabilizing vegetation and shore-protecting oyster habitat, accelerating dramatically the natural erosion process.



1991



2002

Before and after photos of the same tree (arrows).

P&A explored solutions that included both a structural/gabion approach and a preferred and more environmentally friendly natural biodegradable fiber design, and provided detailed structural drawings of each with recommendations

The 49-page report with appendices is being used by St. Johns County to assess options for solutions as well as funding.



P&A Consulting Engineers, Inc.